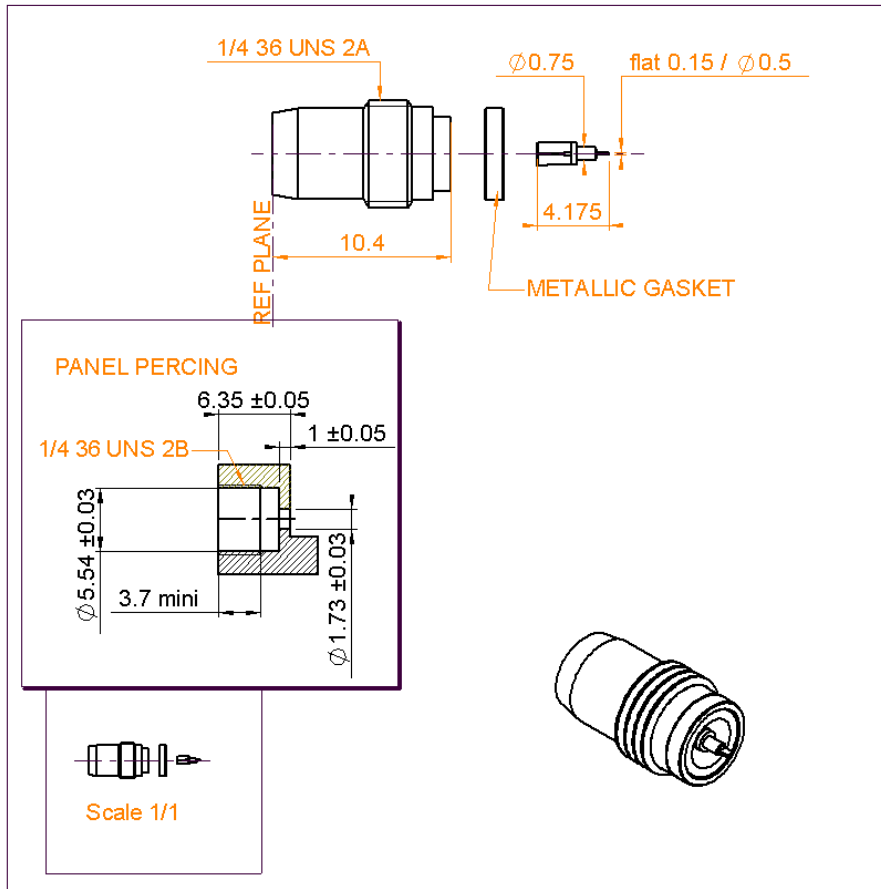


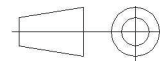
**SCREW-ON MALE RECEPTACLE**  
**HERMETIC - WITH AUXILIARY CONTACT**

**R128.639.071**

Series : BMA



All dimensions are in mm.



COMPONENTS	MATERIALS	PLATINGS (µm)
BODY	STAINLESS STEEL	PASSIVATED .
CENTER CONTACT	BERYLLIUM COPPER	GOLD 1.3 OVER NICKEL 2
OUTER CONTACT	-	-
INSULATOR	PTFE+GLASS BEAD	
GASKET	ALUMINIUM ALLOY	
OTHERS PARTS	DILVER P1	GOLD 1.3 OVER NICKEL 2
-	-	-
-	-	-

Issue : 0449 A

In the effort to improve our products, we reserve the right to make changes judged to be necessary.



**SCREW-ON MALE RECEPTACLE**  
**HERMETIC - WITH AUXILIARY CONTACT**

**R128.639.071**

Series : **BMA**

**PACKAGING**

Standard	Unit	Other
<b>100</b>	<b>'W' option</b>	<b>Contact us</b>

**SPECIFICATION**

**ELECTRICAL CHARACTERISTICS**

Impedance		<b>50</b> Ω
Frequency		<b>0-22</b> GHz
VSWR	<b>1.25</b> +	<b>0.000</b> x F(GHz) Maxi
Insertion loss		<b>0.07</b> √F(GHz) dB Maxi
RF leakage	- (	<b>NA</b> - F(GHz)) dB Maxi
Voltage rating		<b>500</b> Veff Maxi
Dielectric withstanding voltage		<b>1500</b> Veff mini
Insulation resistance		<b>5000</b> MΩ mini

**ENVIRONMENTAL**

Operating temperature	<b>-65/+125</b> ° C
Hermetic seal	<b>10-8</b> Atm.cm3/s
Panel leakage	<b>NA</b>

**OTHERS CHARACTERISTICS**

Assembly instruction **NA**

Others :

**MECHANICAL CHARACTERISTICS**

Center contact retention		
Axial force – Mating end	<b>27</b>	N mini
Axial force – Opposite end	<b>27</b>	N mini
Torque	<b>NA</b>	N.cm mini
Recommended torque		
Mating	<b>NA</b>	N.cm
Panel nut	<b>280</b>	N.cm
Mating life	<b>1000</b>	Cycles mini
Weight	<b>1.150</b>	g

Issue : 0449 A

In the effort to improve our products, we reserve the right to make changes judged to be necessary.

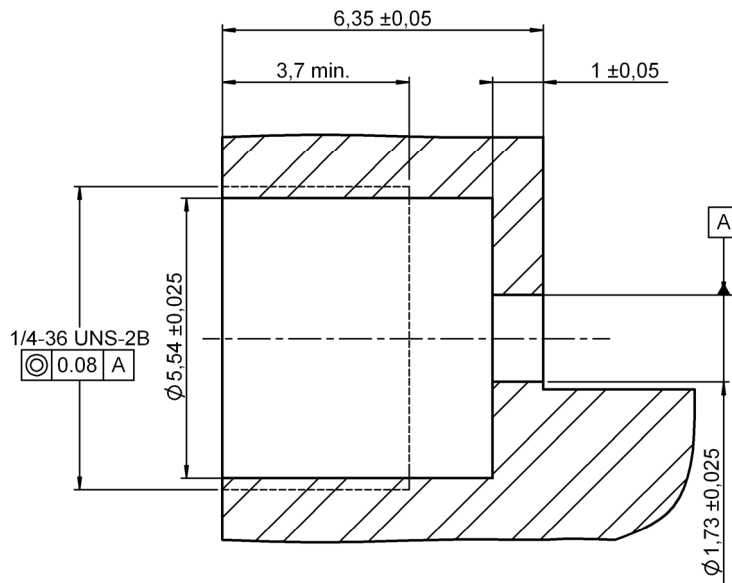


**SCREW-ON MALE RECEPTACLE**  
**HERMETIC - WITH AUXILIARY CONTACT**

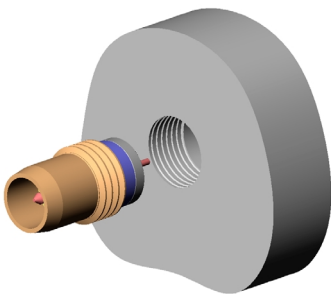
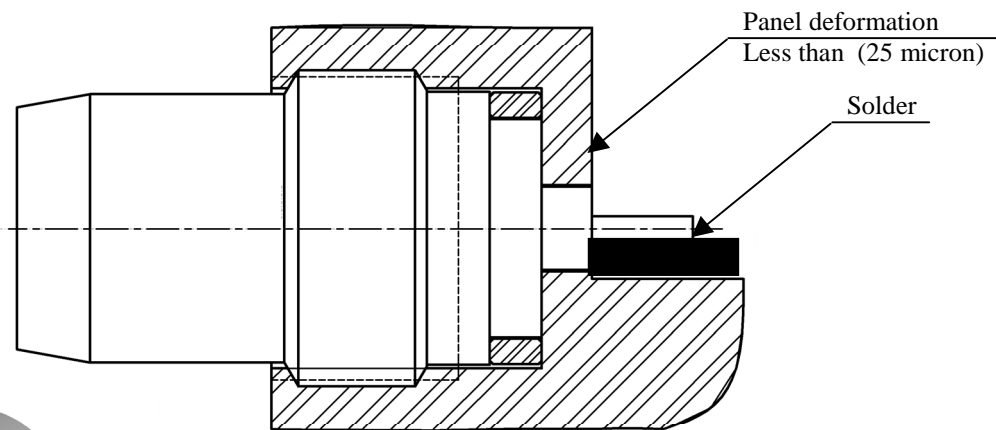
**R128.639.071**

Series : BMA

PANEL DRILLING



MOUNTING HOLE DETAIL



Assemble metal gasket onto connector. Screw both parts into the housing. Tighten the connector up to  $280 \pm 10$  Ncm torque (use special tooling set RADIALL R282 340). Thus the connection hermeticity is guaranteed at  $1 \cdot 10^{-8}$  atm.cm<sup>3</sup>/sec. Then solder the pin. Be careful not put too much solder.

Issue : 0449 A

In the effort to improve our products, we reserve the right to make changes judged to be necessary.

